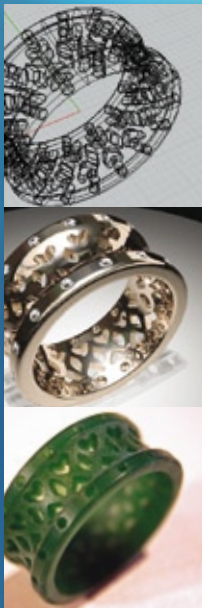


## 123WaxRing

You are jewelry designer, and have just finished a new design in your favorite 3D CAD program (3Design, JewelCad, JewelSpace, Matrix, Rhino, ...). Now you need a wax model for investment casting.



WHITE GOLD WITH 32 SMALL DIAMONDS, MODELED IN RHINO. COURTESY OF WWW.ATELIERDEBRUIJN.NL



What do you think...  
**"I use DeskProto because I'm not a machinist. I have other things to do."**

**Jeweler Mark Morrell**  
Concord, USA)

The revolutionary new **DeskProto 123WaxRing system** (patent pending) makes CNC milling your wax model easier than printing it: **Three times you need to fasten one screw, that's all.**

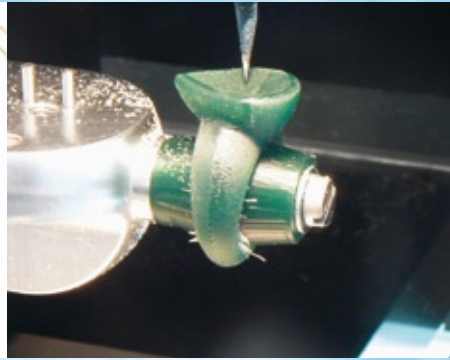
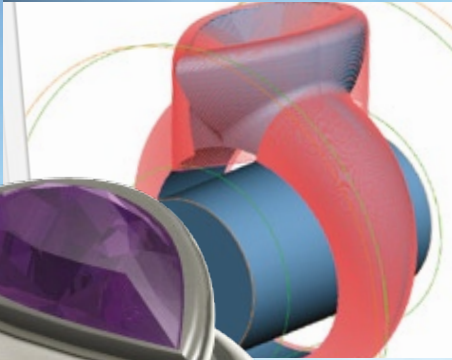
And in addition the 123WaxRing system is faster and cheaper than printing as well!

So far the creation of jewelry wax models on a CNC milling machine has been more complex than on a 3D wax printer. For milling it was needed to mount the correct fixtures, create a wax-block of the correct size, mount the correct cutters, set the workpiece zero points and so on. The 123WaxRing system cleverly eliminates these steps.

No more racing against the clock for your jewelry wax models!







WHITE GOLD WITH LARGE GREEN TOURMALINE, MODELED IN RHINO. COURTESY OF WWW.PETERVANBRUGGEN.COM

### How does it work

The 123WaxRing fixture offers two clamping planes, with two positioning pins each. Pre-shaped wax disks are available that exactly fit the pins, these can be clamped onto the fixture using a screw. The ring model is then machined from three sides: side 1 and 2 lying flat on the horizontal clamping surface, side 3 (rotation axis machining) on the vertical clamping surface. A very simple process with highly accurate results.

The 123WaxRing wizard prepares the toolpaths for this milling process: a sequence of just eleven dialog screens that allows you to select the geometry file, orientate it, choose which wax block to use, choose supports and precision, decide if roughing is needed, calculate the toolpaths and send them to the machine. The 123WaxRing wizard is a part of the DeskProto 3D CAM software.

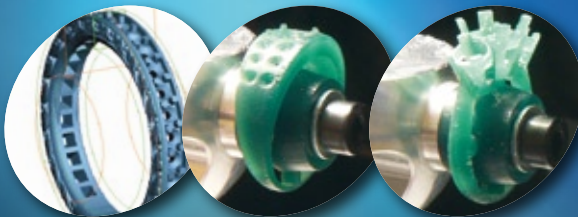


### The 123WaxModel wizard

The 123Waxring Fixture can also be used for charms, pendants, brooches and other non-ring jewelry. For that aim different waxblocks are used: with the reference holes at one side of the block instead of in the middle.

Also for these wax models a wizard has been created: the 123WaxModel wizard. These models are machined from only two sides.

DESIGNED IN JEWELCAD    DESIGNED IN 3DESIGN    DESIGNED IN MATRIX



*The 123WaxRing fixture has been designed to fit the Roland JWX-10 machine. It can be used on any other 4 axis milling machine too, with the aid of an adapter.*

**No more racing against the clock for your jewelry wax models!**

The 123WaxRing wizard runs in the DeskProto 3D CAM software ([www.deskproto.com](http://www.deskproto.com))  
DeskProto and the 123WaxRing wizard are Windows applications.

DeskProto (R) and 123WaxRing are trademarks of Delft Spline Systems  
Copyright (c) Delft Spline Systems.  
Patent pending  
Alle right reserved  
Made in Holland

123WaxRing is a product of Delft Spline Systems  
PO.Box 2071  
3500 GB Utrecht  
The Netherlands  
Phone: +31 30 296 5957  
Fax: +31 30 296 2292  
Websites:  
[www.123waxring.com](http://www.123waxring.com)  
[www.deskproto.com](http://www.deskproto.com)  
Email: [info@deskproto.com](mailto:info@deskproto.com)

**DeskProto®**

FOR MORE INFORMATION VISIT [WWW.123WAXRING.COM](http://WWW.123WAXRING.COM)

