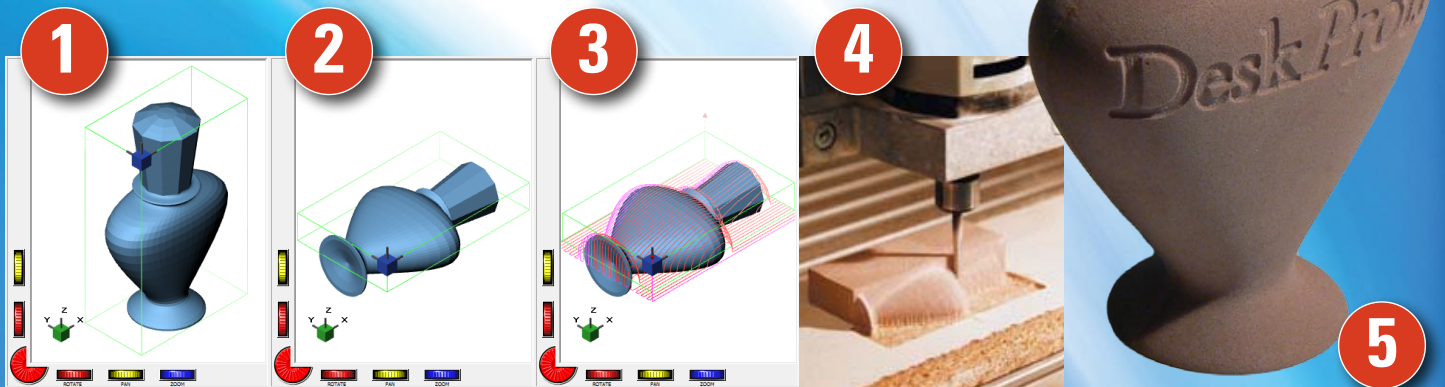


# DeskProto<sup>®</sup>

## 3D CNC machining for non-machinists



1 Read in geometry using an STL or DXF file from any 3D CAD system.

2 Evaluate the geometry, if needed change size and orientation.

3 Let DeskProto calculate NC toolpaths (easy, no CNC know-how needed).

4 Send these paths to the CNC milling machine to create your 3D model.

5 Ready within one hour!



What do you think...  
*"I use DeskProto because I'm not a machinist. I have other things to do."*

**Jeweler Mark Morrell**  
(Concord, USA)

You want to CNC machine a 3D model but do not know how? **DeskProto** can help!

DeskProto will allow you to machine even the most complex **3D geometry** (STL file), any **2D drawing** (DXF file), as well as 3D reliefs based on **photos** (any bitmap file).

Deskproto is a 3D CAM program for 3-axis and 4-axis CNC milling machines. It can be combined with any 3D design program (CAD) and with any CNC milling machine. DeskProto offers an easy, fast, and reliable way to calculate toolpaths and export these as NC program files. And all this is available at a very low price.

No more racing against the clock for your prototypes!





### Advantages:

- Complete set of tools: 3D machining, 2D machining and bitmap machining, all in one program!
- Complete Rotation axis support.
- Dual user interface: both a wizard interface and a dialog interface in one program. You can even combine both to fine-tune your project after completing the wizard. Available wizards: Simple 3D, Two-sided, Indexed (N-sided), rotation, and others.
- Easy to use: DeskProto is meant to be used by designers, jewelers, hobbyists, etc, and does not require special CNC training.
- Amazingly fast calculations: use the trial version to compare with any competing CAM program.
- Both 32 bits and 64 bits builds available. The latter can handle large STL files: up to many GB in size.
- Postprocessors (machine drivers) are free of charge, and also user-configurable.

### What do you think...

*"Working with DeskProto is fantastic: fast, reliable, smooth, easy to learn."*  
**Casimiro Mondino (Italy)**

*"An excellent program that offers us a lower-cost, much more flexible and faster alternative to other Rapid Prototyping technologies."*  
**Johannes Gaston Design (USA)**

*"DeskProto is part of my everyday life, as much as having a beer after work. There is no milling program that can convert a 3D file to toolpaths faster than DeskProto."*  
**Rudolf Thiele (Germany)**

### Applications



#### Product Design

Use your milling machine as a Rapid Prototyping system



#### Jewelry

Machine very smooth wax models for investment casting



#### Arts

Sculptures can be machined in any size and in any material



#### Hobby

Scale models, RC airplanes and boats, figurines, etc.



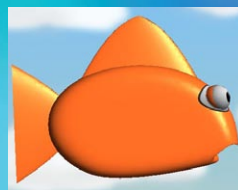
#### Food and sweets

Even the wildest designs can be realized easily



#### Moldmaking

Injection mold cavities, thermoforming patterns, molds for composites, etc.



#### Education

Offer your students hands-on CNC experience within a short time frame



#### Woodworking

Reliefs, signs, ornaments, even the most complex designs



#### Medical and Dental

Machine custom prostheses, insoles, braces, and crowns in any material



#### Lithophanes

Artwork that can only be seen when illuminated from the back side

No more racing against the clock for your prototypes!



DeskProto needs a PC with Pentium processor or newer, Windows XP / Vista / 7 or newer, minimum 1 GB RAM and 100 GB disk, an Open-G/L compatible graphics card is recommended. Input formats: STL (ASCII and Binary), DXF (subset), VRML (subset), BMP, GIF, JPG, PNG. Bitmaps will be converted to 3D reliefs by assigning Z-heights to grey-values. Many output formats: over 200 machine definitions are included, and over 100 postprocessors. It is easy to change these machine definitions and postprocessors, and even to add new ones.

DeskProto is a product of Delft Spline Systems  
 PO.Box 2071, 3500 GB Utrecht, The Netherlands  
 Phone: +31 30 296 5957  
 Website: [www.deskproto.com](http://www.deskproto.com)  
 Email: [info@deskproto.com](mailto:info@deskproto.com)

Made in Holland  
 All Rights reserved  
 © Delft Spline Systems

**DeskProto®**

FOR MORE INFORMATION VISIT [WWW.DESKPROTO.COM](http://WWW.DESKPROTO.COM)